

1. MUNLOCHY IN MAPS AND OTHER MEDIA - PAST-PRESENT AND FUTURE

PREPARED FOR “GET TO KNOW YOUR VILLAGE WALK”, JULY 31 2021 BY JULIAN PAREN



MUNLOCHY AND DISTRICT 1911-1912



2. THE PAST: 1776 Taylor and Skinner Map. .A Plan of the Cross Roads in the Shiress of Ross and Cromartie

The map shows the main track north from the Kessock Ferry passes Munlochy and takes the Mount Eagle road to Invergordon Ferry. The map adds the names of the owners of the main estates. Munlochy is spelt Munlochie. Note that there is a road along the ridge of the Black Isle.

3. THE
PAST:
1791-99
Statistical
Account of
Scotland

For an half
W. of the
Munlochy,
the head of
there are
traces of the
once
rich and
such as
shells etc.;
none now
remembers
seen that
overflowed
at any

1834-45
Statistical
Account of
Scotland

THE
STATISTICAL ACCOUNT
OF
SCOTLAND.

No. 21

DRAWN UP FROM THE COMMUNICATIONS

OF THE

MINISTERS

OF THE

DIFFERENT PARISHES.

By SIR JOHN SINCLAIR, BART.

VOLUME FIRST.

"Ad consilium de republica dandum, caput est nosse rempublicam."
CICERO de Orat. lib. ii.

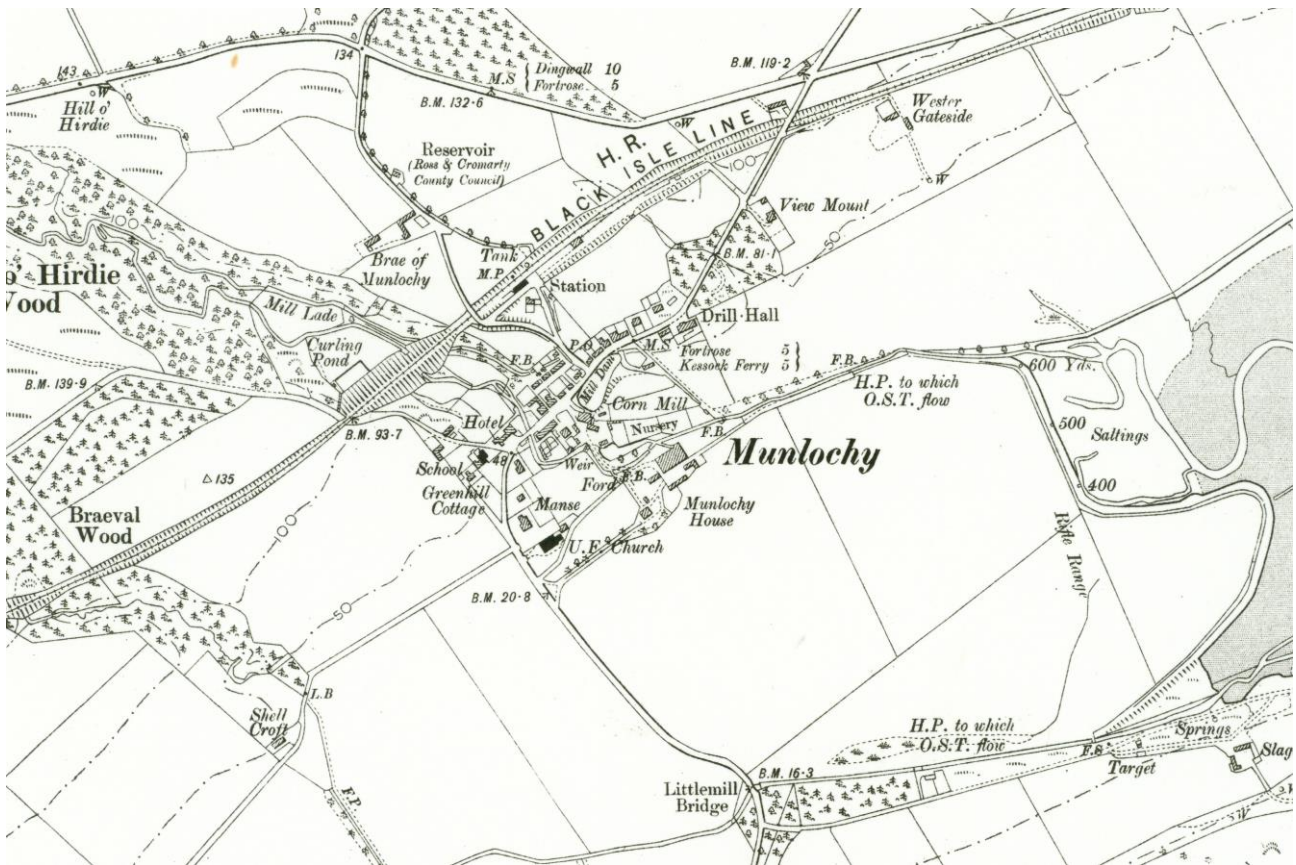
mile to the
village of
which lies at
the bay,
evident
sea's having
covered that
fertile flat,
beds of
but there is
living who
to have
ground
by the sea
period.

At Munlochy on a large farm of fine alluvial soil, a lease of thirty years has been granted to a gentleman of capital and enterprise on condition of his bringing into cultivation about twenty acres of wet land, at present lying waste, and of reclaiming from the sea, by raising proper embankments, between thirty and forty acres of excellent carse land.



4. THE PAST: 1880 Ordnance Survey six inches to the mile map

The map shows Munlochy has two Smithies, a Corn Mill, a Nursery, a Post Office and Mile Post, a Mill Lade, a Volunteer Rifle Range and a Volunteer Drill Hall at Wester Gateside. Except in the centre of Munlochy there are no houses on Millbank Road east of Munlochy. A large pond exists by the road adjacent to the Mill called Mill Dam.



5. THE PAST: 1907 Ordnance Survey six inches to the mile map

The map shows the arrival in 1894 of the Highland Railway Black Isle Line with its railway station and a new Drill Hall (now the Village Hall) and there is also a Hotel. There is a reservoir close to the town, and a curling pond. Beyond the Village Hall there is one house, View Mount, on Millbank Road. Millbank Road crosses the railway line on a bridge while the line is in a cutting.

The construction of the railway bridge to the west of the railway station





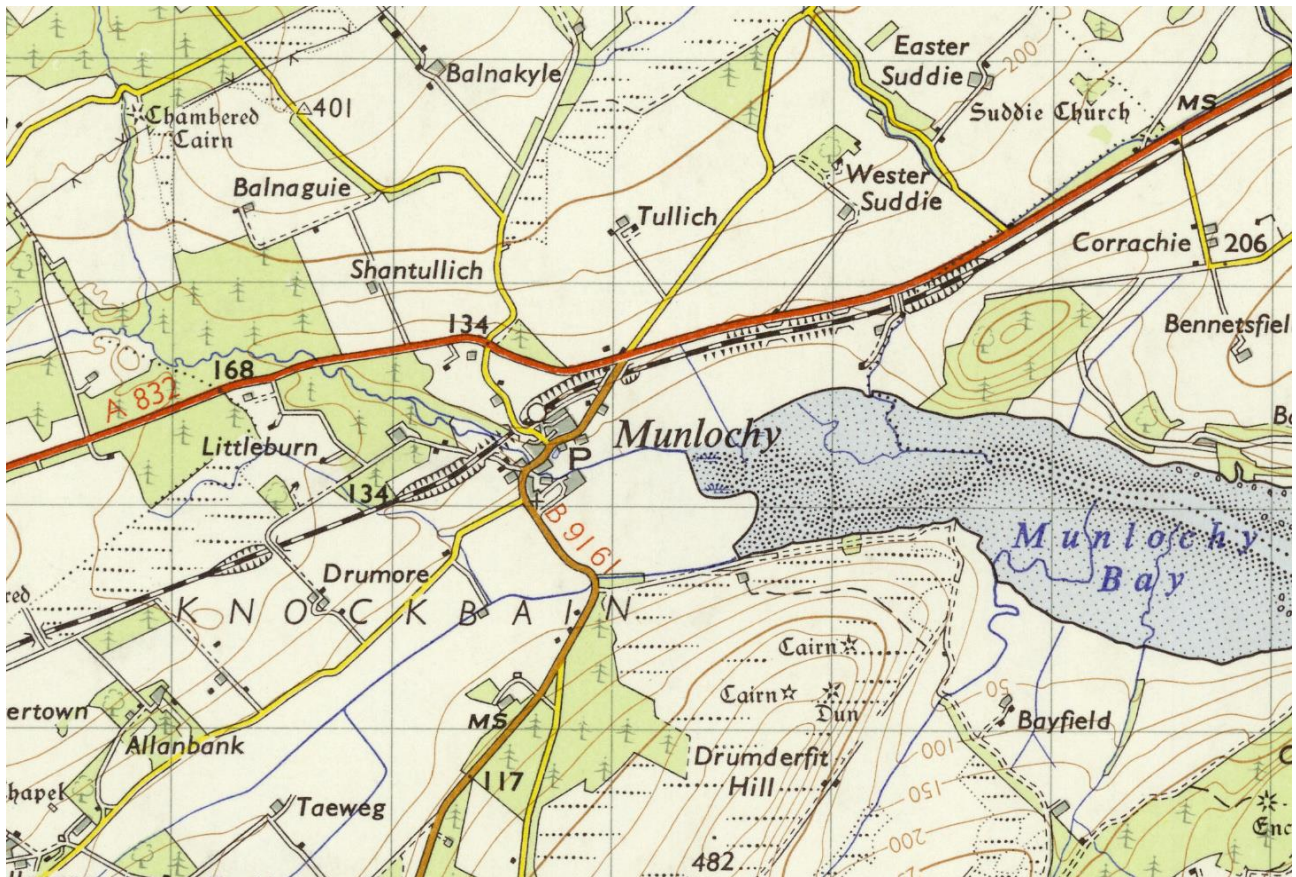
6. THE PAST: 1920s Munlochy High Street, Frith Postcard

Much of the High Street has remain visually unaltered during the last 100 years. The road width has changed and a wall taken down, but most is highly recognisable.



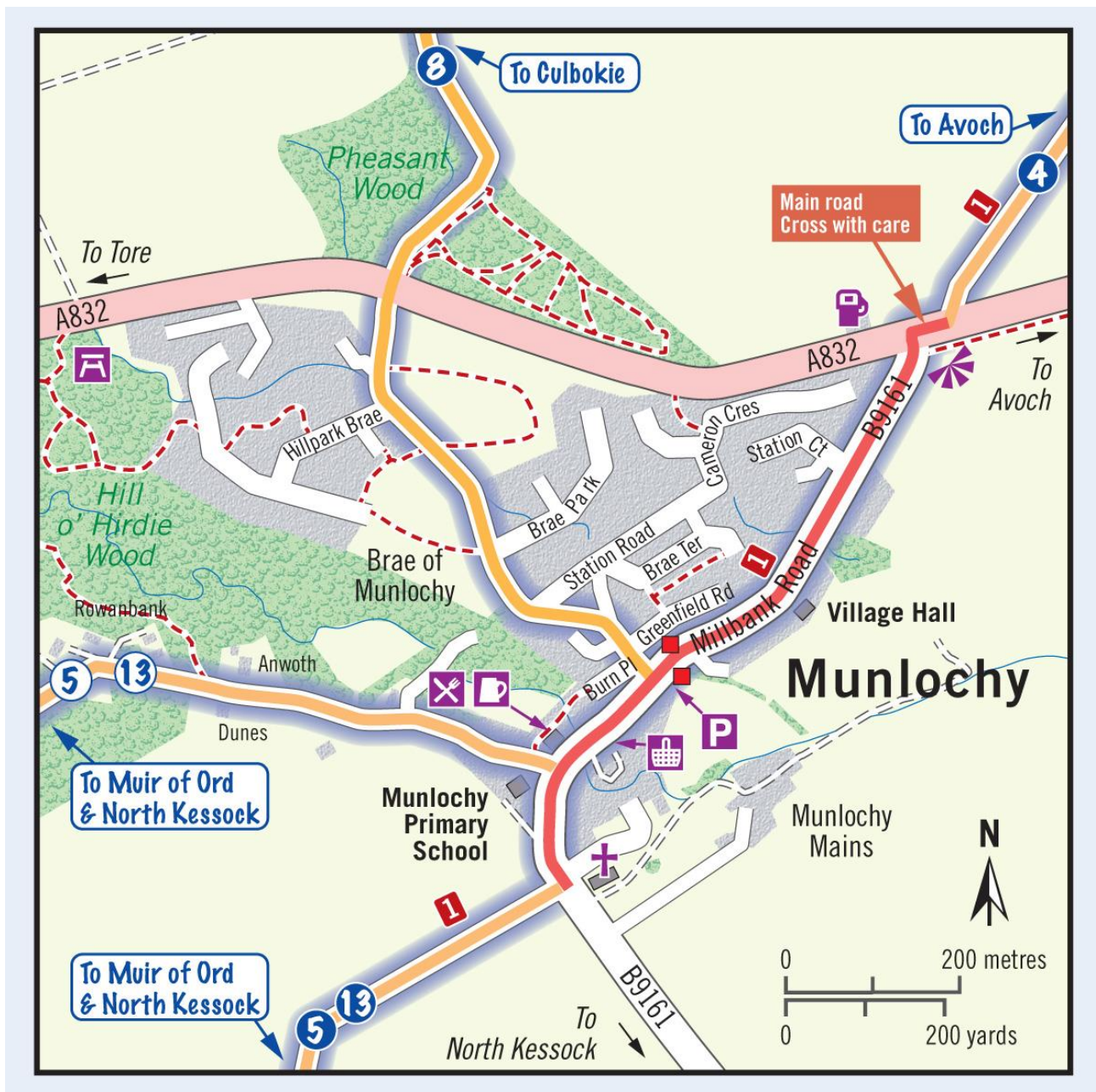
7. THE PAST: 1958 Ordnance Survey grid map

The map shows there are now houses between Millbank Road and the railway line. The curling pond and nursery still exist as does the railway (which closed to freight in 1960). The Mill Dam millpond is still a feature of the village.



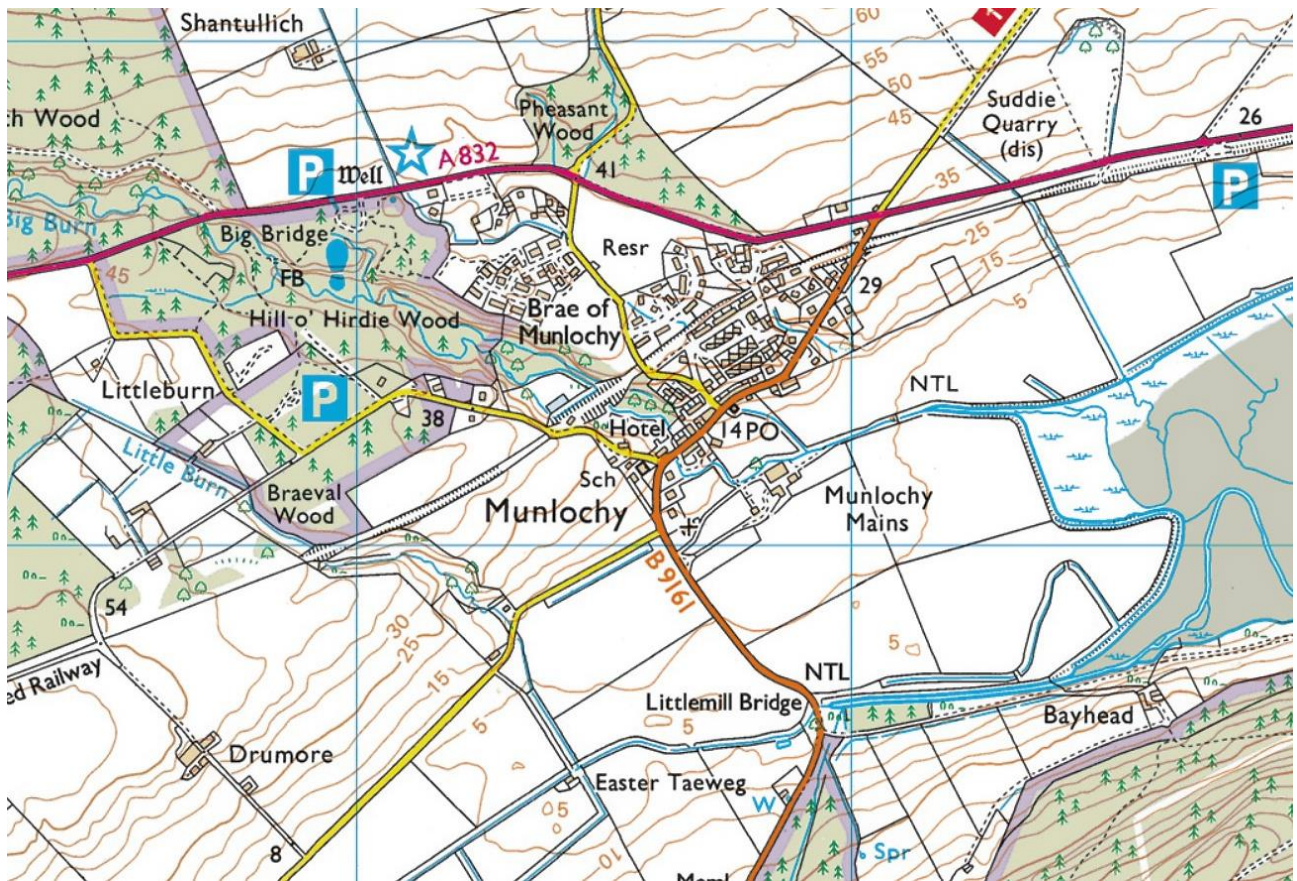
8. THE PAST: 1961 Ordnance Survey Seventh Series one inch to one mile

The map shows the railway station as a white circle showing it to be closed. All OS maps published since 1961 are copyright.



9. THE PRESENT: 2020 Transition Black Isle's Active Travel Map

The map is called "The Black Isle by foot, bike, bus and train - the perfect map to help the smarter traveller explore the Black Isle". The map includes the extension to Cameron Crescent and shows local paths through Pheasant Wood and Littleburn Wood. The map is the copyright of Helen Stirling through www.helenstirlingmaps.com 2020.



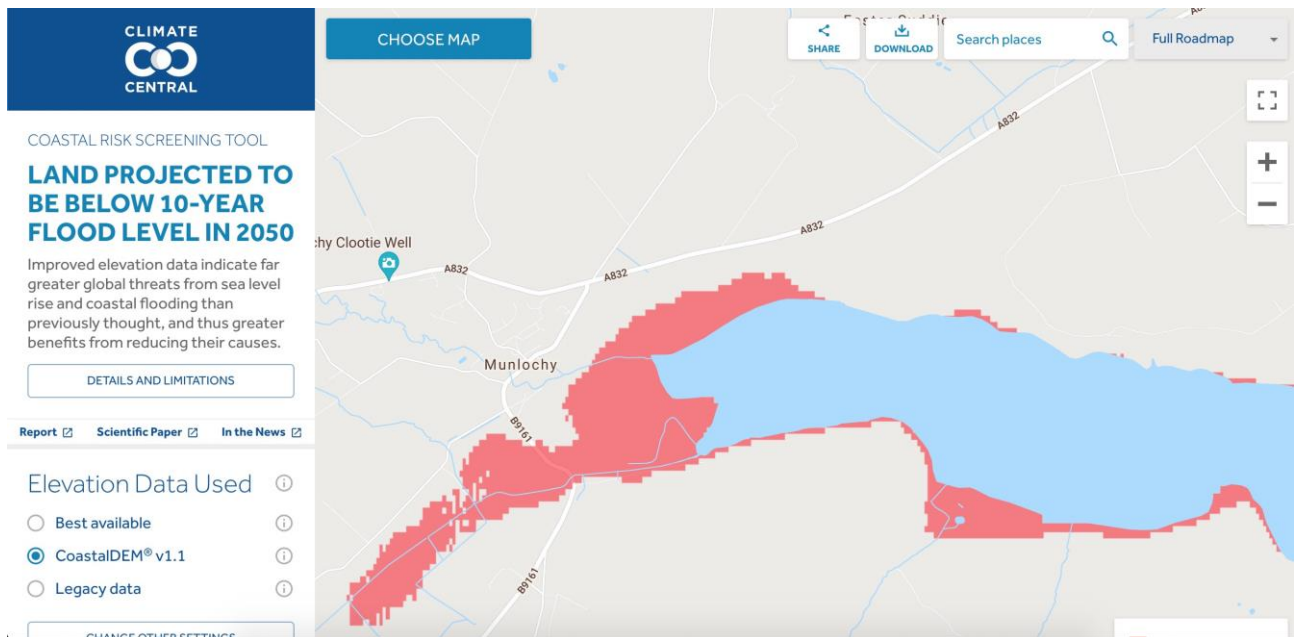
10. THE PRESENT: 2021 Ordnance Survey 1:25,000 map OS Leisure Map of the Black Isle

This is the most up-to-date official map of Munloch and is the version available from Ordnance Survey On-line Mapping. This is the village today. © Crown Copyright and Database rights *Julian Paren has a subscription to OS maps and is allowed to create paper copies of any part of a map.*



11. THE FUTURE: 2020-2040 Map prepared for the Highland Council's Public Consultation on the Inner Moray Firth Local Development Plan.

The map shows the future development plans for Munlochy. Preferred sites for development are coloured green (ML01 to ML04) and those not looked on favourably are coloured red (ML05 and ML06).



12. THE FUTURE: 2050 Sea level detail from a global on-line map prepared by Climate Central

This version of the data available from the on-line resource presents a pessimistic prediction for the impact of rising sea levels based on a belief that climate change targets will only partially be met. The map for Munloch Bay assumes there are NO coastal defences whatsoever. The map stresses why coastal defences continue to be needed. Without coastal defences once every ten years the water could rise to the map position, as a result of a number of unfavourable circumstances occurring at the same time.